

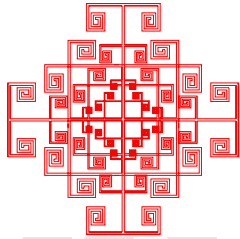
**Kohan**  
Inc.

Professional Consultants

**Commercial Design Team**

San Francisco, California

[www.kohaninc.com](http://www.kohaninc.com)



**Kohan Inc.**  
Professional Consultants

## *A Note From The CEO*

Mohsen Ghoreishi, CEO/President



As CEO and president of Kohan Inc., I am pleased to bring you our Corporate/commercial facility expertise as a new discipline to our work. This work, like all other architectural services we provide, will be directed by our new principal and project architect in-charge, Mr. Leonardo Redada. At **Kohan Inc.**, our culture and values provides services above and beyond the traditional consulting practice. We are a one-of-a-kind firm of professional consultants that can help you turn your project into reality. We look forward to the opportunity of being a partner in your future projects.

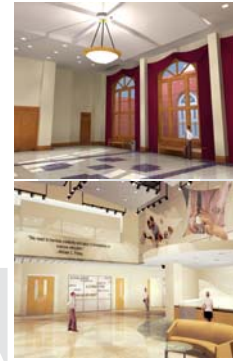
## *The Idea*

Kohan Inc. carries the philosophy of dignity and distinction, based on our cultural values. This is not only what we believe, but we practice. As professionals we are an entity which brings the best and creates the latest to the world with regards to the past. At Kohan Inc., we demonstrate these values to our clients at the corporate level in operational and facility design solutions.

## *Who Are We?*

**Kohan Inc.**, Commercial team specializes in commercial shell and interior upfit products. Our wide range of consulting services includes the following:

- Market analysis
- Operational analysis
- Planning
- Computer simulation
- Design consulting
- Project scope and definition
- Pre-design
- Programming
- Schematic design
- Construction administration
- Marketing
- Feasibility and market assessment



## *Our Vision*

It is also our vision to provide you with paramount consulting services. We believe that building lasting partnerships with our clients will cultivate trust and confidence, which we believe, is a core value and invaluable asset for any business relationship.

## *Outcome*

The **Kohan** Commercial Design Team efforts can result in the following:

- Building design that's sensitive to both the environment and budget.
- Increased customer satisfaction
- Improved through time for public hearings and local government laws and regulation on the project
- A flexible physical environment that reflects both current operations and future expansion.

## *Publications*

The following is a list of publications available to you. Please contact us with your request.

- List of available pre-design services to help you get started in planning your new project
- Top 15 problems to avoid when renovating an existing building
- Work flow analysis information for your new or existing space and accurate projection of total number of years before the building is overloaded

Information on the **Kohan** commercial design team, email us at: [Commercial@kohaninc.com](mailto:Commercial@kohaninc.com)

**Kohan Inc.**  
Professional Consultants

530 Howard St. Suite 470  
San Francisco, CA 94105  
t. (415) 348-0008  
f. (925) 884-8888

*The Best In Interiors And  
Commercial Facilities*